

ILLUSTRATED PARTS LIST

MODELS	TOP ASSEMBLY	SERIAL NUMBER PREFIX
MAC 80A	400029B	11-,12-
PRO SCAPER I	400029H	12-
EAGER BEAVER II	400032B	11-,12-

McCulloch String Trimmers carry a model number (400029 and 400032) followed by a suffix letter B - MAC 80A; H - Pro Scaper I, and 32B - Eager Beaver II). However, these models are identified by the serial number stamped on the identification plate attached to the fuel tank bracket.

For your convenience, Service Bulletins which affect part numbers listed in this document are referenced in this IPL. Service Bulletin numbers are boxed and precede part numbers.

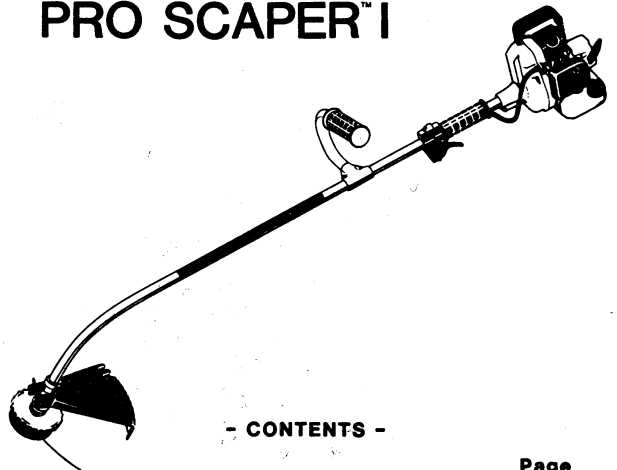
This IPL supercedes and replaces IPL 217744 for all MAC 80A II level models. It also supercedes and replaces IPL 217746 for all Eager Beaver II II level models.

The policy of McCulloch is one of continual improvement in design, manufacturing and engineering advancement wherever possible to assure still finer two-cycle power tools. Hence specifications, equipment, colors, design and manufacturer's suggested list prices are subject to change without notice and McCulloch Corporation reserves the right to make such changes without prior notification or obligation to backfit or supply backfit components for units previously shipped from the factory.

JUNE 1986

STRING TRIMMERS

MAC™ 80A
EAGER BEAVER™ II
PRO SCAPER™ I



- CONTENTS -

	Page
FIGURE 1. Engine Assembly	2
FIGURE 2. Drive Shaft/String Head Assembly	4
FIGURE 3. Carburetor Assembly	6
FIGURE 4. Carburetor Assembly	7
ACCESSORIES	4
ENGINE SPECIFICATIONS	5



McCULLOCH
CORPORATION

218824-E
(Revision 1)

(This IPL Replaces IPL 217744 & 217746)

Figure 1

ENGINE ASSEMBLY

MAC™ 80A
EAGER BEAVER™ II
PRO SCAPER™ I

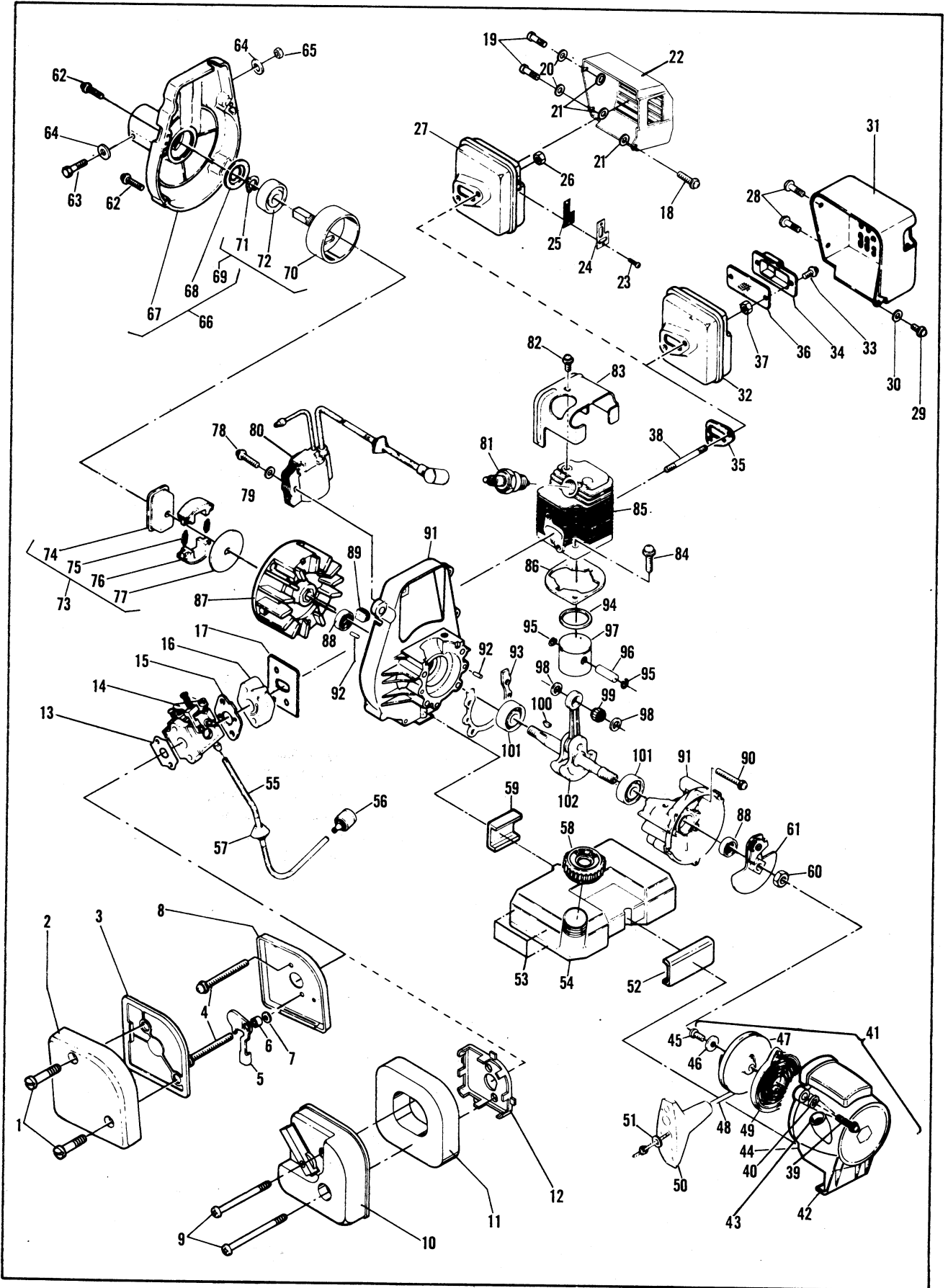


Fig. 1 ENGINE ASSEMBLY

ITEM NO.	PART NUMBER	DESCRIPTION	UNITS PER ASY.
1	217669 ①	Screw (15-25 inch pounds torque)	2
2	215988 ①	Cover-Air Cleaner	1
3	217376 ①	Filter-Air	1
4	216903 ①	Screw-M5 x 55 (18-25 inch pounds torque)	2
5	215991 ①	Shutter-Choke	1
6	215993 ①	Spacer	1
7	216591 ①	Washer-Flat M5	1
8	216108 ①	Kit-Airbox/Grommet	1
9	219078 ②	Screw-M5 x 69 SEMS (18-25 inch pounds torque)	2
10	219098 ②	Cover Assembly-Choke	1
11	219145 ②	Filter-Air (Foam)	1
12	219144 ②	Box-Air	1
13	216226 ③	Gasket-Air Filter	1
14		Carburetor Assy (Fig. 3,4)	1
15	218933	Gasket Carburetor	1
16	219070	Insulator-Carburetor	1
17	216575	Gasket/Shield-Insulator	1
18	217669 ④	Screw-M4 x 25 (12-16 inch pounds torque)	1
19	213177 ④	Screw-M4 x 18.5	2
20	217672 ④	Washer-M4 Flat	2
21	219079 ④	Spacer-Muffler	3
22	218962 ④	Shield-Muffler	1
23	219194 ④	Screw-5-20 x .438 (12-16 inch pounds torque)	2
24	219150 ④	Cover-Spark Arrester	1
25	219149 ④	Screen-Spark Arrester	1
26	217275 ④	Nut-Flange M5 (41-50 inch pounds torque)	1
27	219152 ④	Muffler Assembly	1
28	216025 ⑤	Screw-M4 x 8	2
29	213177 ⑤	Screw-Pan Head M4 x 18.5 (12-16 inch pounds torque)	1
30	217672 ⑤	Washer-M4	1
31	215753 ⑤	Shield-Muffler	1
32	215506 ⑤	Muffler Assembly	1
33	216025 ⑤	Screw-M4 x 8	2
34	217318 ⑤	Cover-Screen	1
35	215515 ④⑤	Gasket-Muffler	1
36	216863 ⑤	Screen-Spark Arrester	1
37	217275 ⑤	Nut-Flange M5 (41-50 inch pounds torque)	2
38	215517	Stud-Muffler (41-50 inch pounds torque)	2
39	213177	Screw-Sems (12-16 inch pounds torque)	2
40	217672	Washer-Plain	2
41	217388	Starter Assembly	1
42	217389	. Housing-Starter	1
43	-- --	.. Guide-Rope	1
44	-- --	.. Eyelet	3
45	215874	. Screw-Pan Head M4 x 9.5	1
46	216590	. Washer-M4 Flat	1
47	216092	. Drum/Rope Assembly	1
48	216093	.. Rope-Starter	1
49	217482	. Spring-Starter	1
50	216792	. Handle-Starter	1
51	218941	. Washer-Nylon	1
52	217382	Cushion-Fuel Tank	1
53	217383	Decal-40:1 (Fuel/Oil Ratio)	1
54	217387	Fuel Tank/Hose Assembly	1
55	217264	. Hose-Fuel	1

ITEM NO.	PART NUMBER	DESCRIPTION	UNITS PER ASY.
56	216985	. Pickup-Fuel	1
57	215495	. Grommet	1
58	216346	Cap-Fuel	1
59	217390	Cushion-Fuel Tank	1
60	216583	Nut-Hex M8 (149-166 inch pounds torque)	1
61	215525	Ratchet Assembly (Hand Tighten to Seat)	1
62	213177	Screw-Pan Head M4 x 18.5	4
63	217158	Screw-Hex Head M5 x 35	1
64	216591	Washer-Flat M5	2
65	217159	Nut-Hex M5 (35-44 inch pounds torque)	1
66	218057	Housing Assembly-Fan	1
67	217533	. Housing-Fan	1
68	215534	. Plate-Thrust	1
69	218065	. Drum Assembly-Clutch	1
70	218063	.. Drum-Clutch	1
71	213186	.. Ring-Retaining	1
72	213187	.. Bearing-Ball	1
73	216060	Clutch Assembly	1
74	215536	. Rotor-Clutch	1
75	215537	. Spring-Clutch	2
76	215538	. Shoe-Clutch	2
77	215539	Plate-Side	1
78	213177	Screw-Pan Head M4 x 18.9 (12-16 inch pounds torque)	2
79	110613	Washer-#8 Hard	2
80	217439 ⑥	Wabash Ignit. (Solid State)1 (Air Gap.010-.012)	1
81	235593	Spark Plug 105 -130 inch pounds torque)	1
82	213178	Screw-M5 x 8.5 (15-25 inch pounds torque)	1
83	215540	Cover-Cylinder	1
84	217320	Screw-Pan Head M6 x 18 (70-80 inch pounds torque)	2
85	217296	Cylinder	1
86	215542	Gasket-Cylinder	1
87	217378 ⑥	Flywheel Assembly	1
88	216500 ⑦	Seal-Crankshaft/Oil	2
88	83859 ⑧	Seal-Crankshaft/Oil	2
89	215541	Grommet	1
90	213179	Screw-Pan Head M5 x 28.5 (34-40 inch pounds torque)	4
91	217373 ⑦	Crankcase Assembly	1
91	218185 ⑧	Crankcase Assembly	1
92	213191	Pin	4
93	215545	Gasket-Crankcase	1
94	217475	Ring-Piston	1
95	216343 ⑦	Ring-Snap	2
95	111026 ⑧	Ring-Snap	2
96	215551 ⑦	Pin-Wrist	1
96	218275 ⑧	Pin-Wrist	1
97	217295 ⑦	Piston	1
97	218273 ⑧	Piston	1
98	213196 ⑦	Washer-Piston Pin	2
99	213195 ⑦	Bearing-Needle	1
99	110984 ⑧	Bearing-Needle	1
100	102164	Key-Flywheel	1
101	216143 ⑦	Bearing	2
101	213282 ⑧	Bearing	2
102	216444 ⑦	Crankshaft Assembly	1
102	218106 ⑧	Crankshaft Assembly	1

① ② One of two air cover/choke assemblies used on units. Identify type air cover/choke. Order only Type 1 or Type 2 replacement parts.

③ Used on some earlier Mac 80A, 11 level, and Eager Beaver II, 11 level, models with Zama carburetor, P/N 215494-01. If air filter gasket was not originally installed on these units, it is not required when servicing these models.

④ ⑤ One of two muffler systems used on units. Identify muffler. Order only Type 4 or Type 5 replacement parts.

⑥ See Service Notes Page 8.

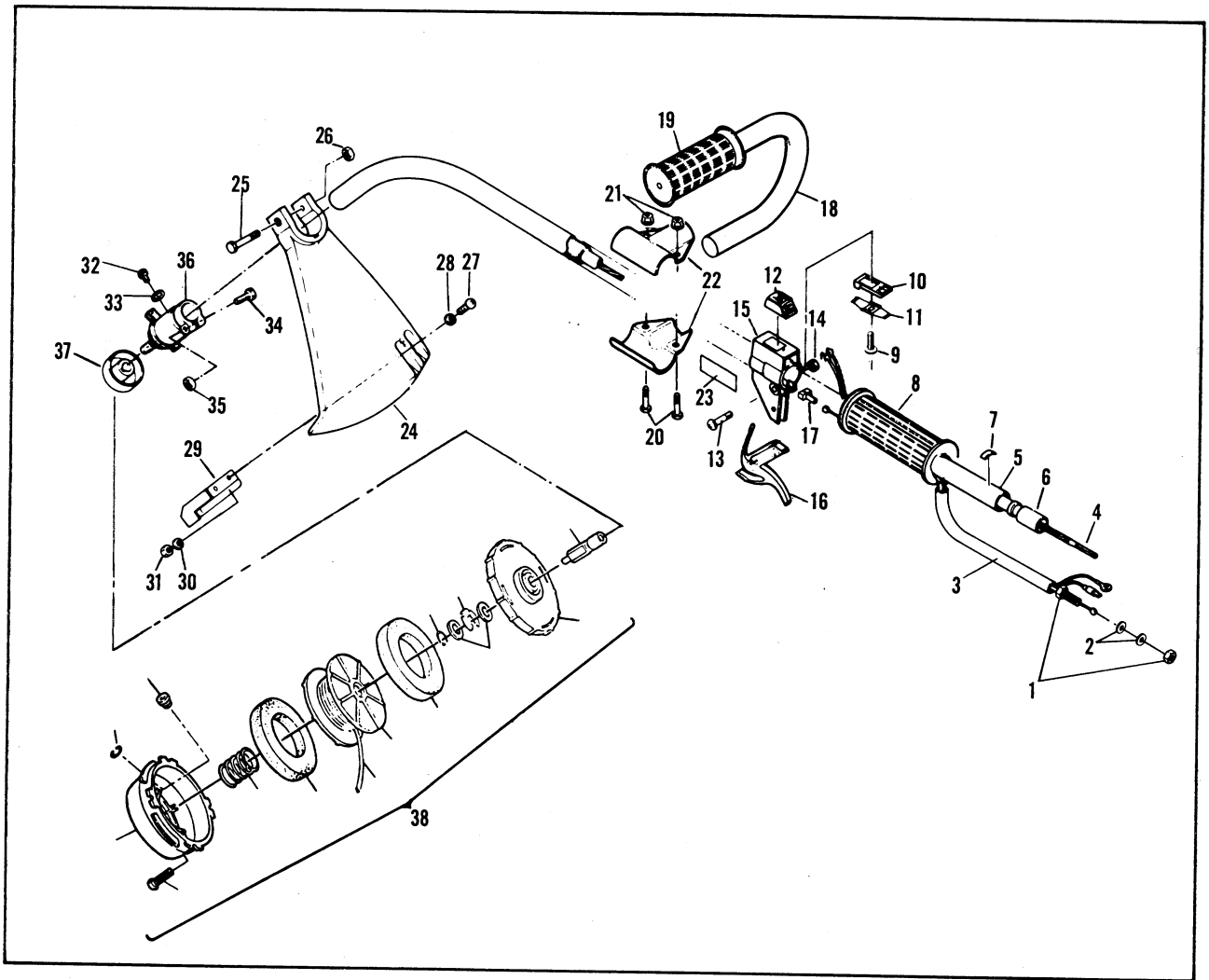
⑦ Used on 11 level models only.

⑧ Used on 12 level models only.

Figure 2

**DRIVE SHAFT
STRING HEAD ASSEMBLY**

**MAC™ 80A
PRO SCAPER™ I
EAGER BEAVER™ II**



ACCESSORIES

CUTTER HEAD	216821
REPLACEMENT SPOOL WITH LINE(30')	216820
40' REPLACEMENT LINE	216898
REPLACEMENT LINE - 1 lb. BULK	216899-01
McCULLOCH 2 CYCLE CUSTOM LUBRICANT - 40:1	93770
FUEL CAP	216346

Fig. 2 DRIVE SHAFT / STRING HEAD ASSEMBLY

ITEM NO.	PART NUMBER	DESCRIPTION	UNITS PER ASY.
1	217403	NUT-HEX M6 x 1 (18-26 inch pounds torque)	2
2	216596	WASHER-M6	2
3	215306	HARNES - WIRING ASSY	1
4	217369 ①	SHAFT - FLEXIBLE DRIVE	1
	215324 ②	SHAFT - FLEXIBLE DRIVE	1
5	217362 ①	OUTER HOUSING ASSEMBLY	1
	217361 ②	OUTER HOUSING ASSEMBLY	1
6	217367 ①	. SLEEVE	1
	217366 ②	. SLEEVE	1
7	1767 216603	DECAL POSITION	1
8	215322	GRIP	1
9	110706	SCREW-PAN HEAD 8-18 x .50	1
10	215319	BASE - STOP SWITCH	1
11	215320	CONTACT - SWITCH	1
12	68846	BUTTON - STOP SWITCH	1
13	216027	SCREW-PAN HEAD M5 x 28.5	1
14	217159	NUT - HEX M5	1
15	215317	HOUSING - TRIGGER	1
16	215318	TRIGGER - THROTTLE	1
17	215323	GUIDE	1
18	217856	"J" HANDLE/GRIP ASSEMBLY	1
19	94212	. GRIP	1
20	217935	SCREW - 10-24 x .50 TORX (26-35 inch pounds torque)	2
21	218315	NUT - HEX (26-35 inch pounds torque)	2
22	215337	CLAMP - HANDLE	2
23	218295	DECAL - WARNING	1
24	217869	SHIELD ASSEMBLY - GRASS	1
25	216595	. SCREW-HEX HEAD M6 x 50	1
26	215871	. NUT - HEX M6x1 (18-26 inch pounds torque)	1

ITEM NO.	PART NUMBER	DESCRIPTION	UNITS PER ASY.
27	217936	. SCREW-10-24 x .75 TORX	2
28	110582	. WASHER - 10 PLAIN	2
29	216587	. HOUSING - KNIFE	1
30	103174	. WASHER - LOCK	2
31	218315	. NUT	2
32	215874	SCREW - M4 x 9.5 TORX (9-17 inch pounds torque)	1
33	217672	WASHER - M4 FLAT	1
34	217937	SCREW - 10-24 x 1.00 (25-29 inch pounds torque)	1
35	218315	NUT	1
36	218283	HOUSING ASSEMBLY - SPINDLE	1
37	218214	COLLAR	1
38	1788 229158	STRING HEAD ASSEMBLY	1

① Used on 11 Level 29B and 32B as well as 12 Level 29H.

② Used on 12 Level 29B and 32B.

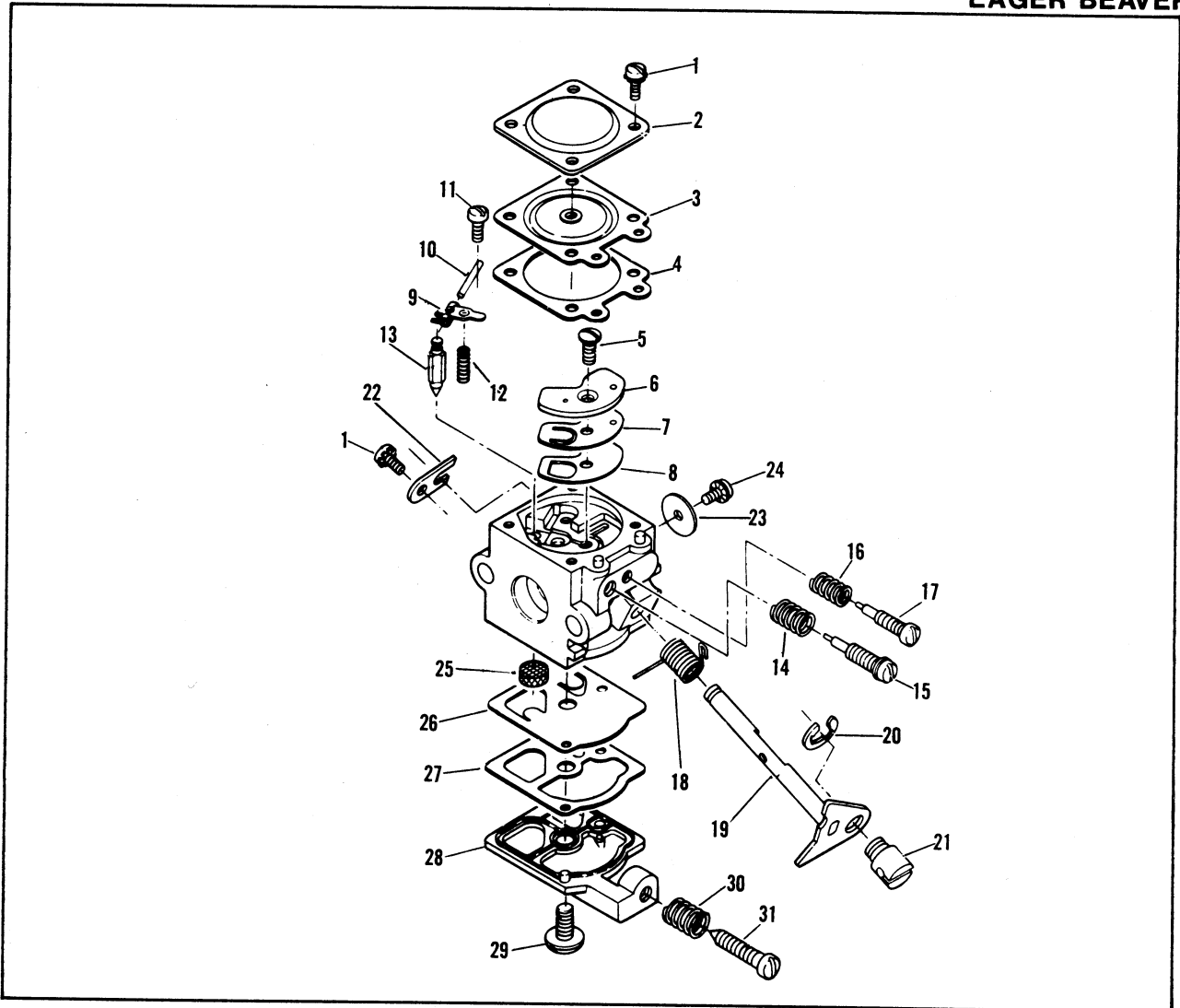
ENGINE SPECIFICATIONS

Engine Type Air-cooled, 2-cycle, single cylinder
Displacement cc/cu. in. 21.2/1.29
Weight/lbs. 11.8 lbs.
Fuel Capacity 16 ozs.
Drive Shaft Flex
Handle "J" Handle and Pole Grip
Cutting Line095" Single Line Automatic Feed
Cutting Swath 17"
Carburetor Diaphragm type
Ignition Electronic
Spark Plug DJ-8J Champion or equivalent
Clutch Centrifugal Clutch
Drive Shaft Lubrication Good quality lithium grease

Figure 3

CARBURETOR ASSEMBLY

MAC™ 80A
PRO SCAPER™ I
EAGER BEAVER™ II



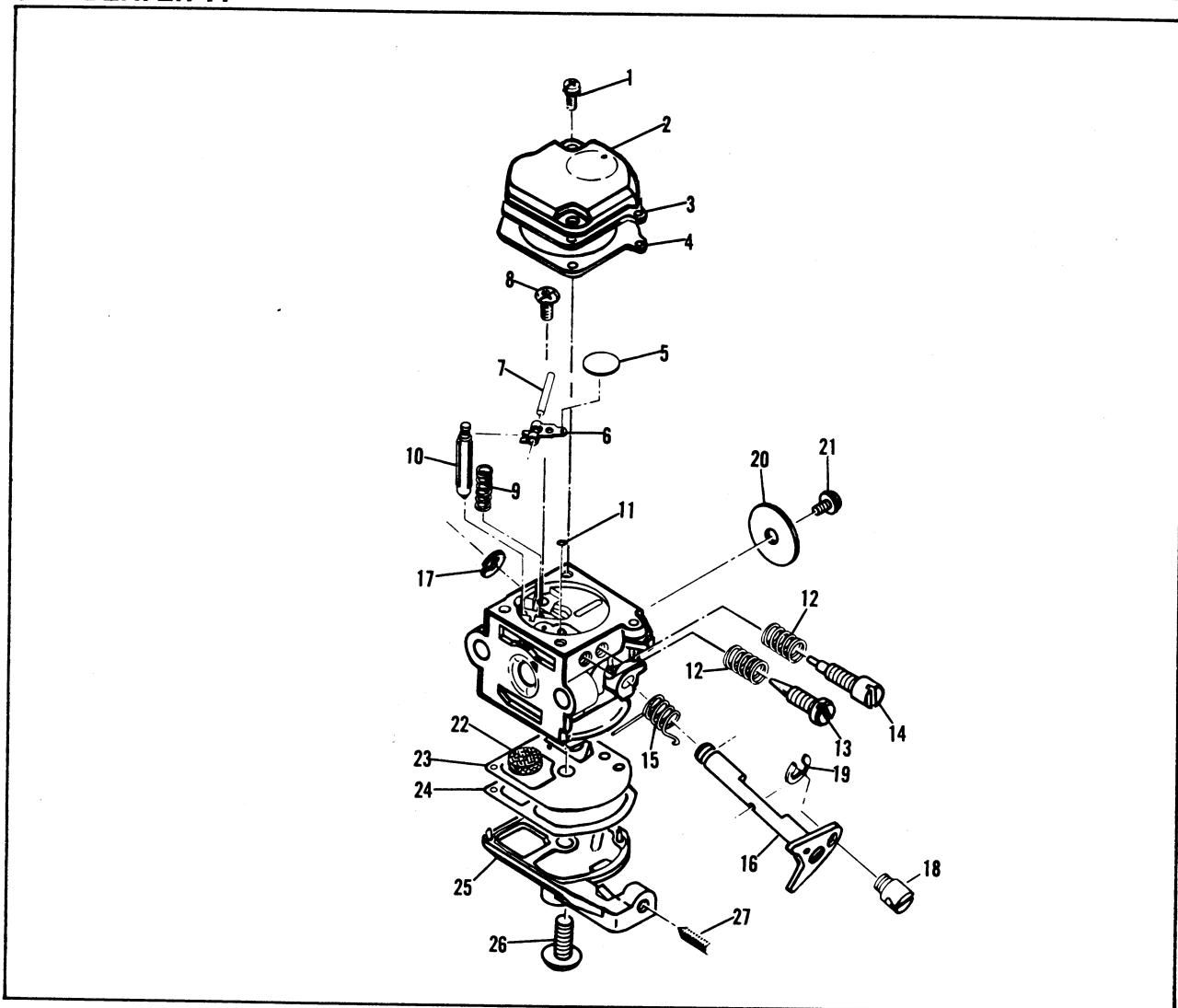
ITEM NO.	PART NUMBER	DESCRIPTION	UNITS PER ASY.
	- - ③	Carburetor Assembly (WA-146)	1
1	- -	Screw - Cover	5
2	- -	Cover - Diaphragm	1
3	- - ②①	Diaphragm - Metering	1
4	- - ②①	Gasket - Diaphragm	1
5	- - ①	Screw - Circuit Plate	1
6	- -	Plate - Circuit	1
7	- - ②①	Diaphragm - Circuit Plate	1
8	- - ②①	Gasket - Circuit Plate	1
9	- - ②①	Lever - Metering	1
10	- - ②①	Pin - Lever	1
11	- - ②①	Screw - Lever Pin	1
12	- - ②①	Spring - Lever	1
13	- - ②①	Valve - Inlet Needle	1
14	- - ①	Spring - High Speed Needle	1
15	- - ①	Needle - High Speed	1

ITEM NO	PART NUMBER	DESCRIPTION	UNITS PER ASY.
16	- - ①	Spring - Idle Needle	1
17	- - ①	Needle - Idle	1
18	- - ①	Spring - Throttle Return	1
19	- -	Shaft - Throttle	1
20	- -	Clip	1
21	- -	Swivel	1
22	- -	Clip - Throttle Shaft	1
23	- -	Valve - Throttle	1
24	- - ①	Screw - Throttle Valve	1
25	- - ②①	Screen - Inlet	1
26	- - ②①	Diaphragm - Fuel Pump	1
27	- - ②①	Gasket - Fuel Pump	1
28	- -	Cover - Fuel Pump	1
29	- -	Screw - Pump Cover	1
30	- -	Spring - Idle Screw	1
31	- -	Screw - Idle Adjusting	1

- ① Contained in Major Repair Kit, P/N 217111.
- ② Contained in Minor Repair Kit, P/N 217110.
- ③ One of two carburetors used alternately. Identify carburetor before ordering repair kits.

NOTE:
Items are shown for identification and disassembly sequence purposes only. Components are NOT available individually. Kits listed are the ONLY service parts available for this carburetor. For carburetor replacement, see page 7.

CARBURETOR ASSEMBLY Figure 4



ITEM NO.	PART NUMBER	DESCRIPTION	UNITS PER ASY.
	215494-01	① Carburetor Assembly (Zama C1S-M8)	
1	- - ③②	Screw - Cover	2
2	- -	Cap - Main	1
3	- - ③②	Diaphragm - Main	1
4	- - ③②	Gasket - Main	1
5	- - ③②	Disk	1
6	- - ③②	Arm - Needle Valve	1
7	- - ③②	Pin - Arm	1
8	- - ③②	Screw - Pin	1
9	- - ③②	Spring - Arm	1
10	- - ③②	Valve - Needle	1
11	- - ③②	Plug - Welch	1
12	- - ②	Spring - Needle	2
13	- - ②	Needle - High Speed	1

ITEM NO.	PART NUMBER	DESCRIPTION	UNITS PER ASY.
14	- - ②	Needle - Idle	1
15	- -	Spring - Throttle Return	1
16	- -	Shaft Asy - Throttle	1
17	- - ②	"E" Ring	1
18	- - ②	Post	1
19	- - ②	"E" Ring	1
20	- -	Valve - Throttle	1
21	- -	Screw - Throttle Valve	1
22	- - ③②	Strainer	1
23	- - ③②	Diaphragm - Fuel Pump	1
24	- - ③②	Gasket - Pump	1
25	- -	Cover - Fuel Pump	1
26	- - ③②	Screw - Pump Cover	1
27	- -	Screw - Idle Adjusting	1

① One of two carburetors used alternately.
 Identify carburetor before ordering repair kits.

② Contained in Major Repair Kit, P/N 218071.

③ Contained in Minor Repair Kit, P/N 218073.